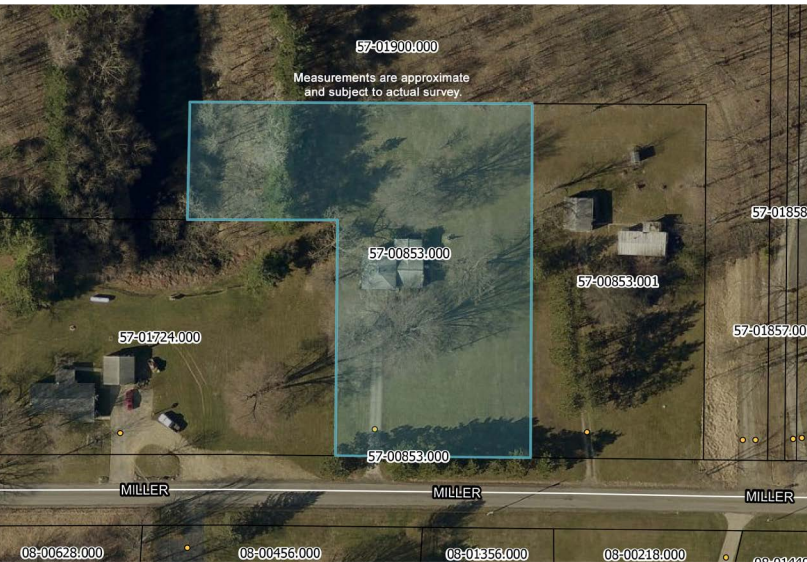


# ABSOLUTE AUCTION

TUESDAY, JUNE 30, 2026, 5:30 PM



REAL ESTATE



## LIVE ONSITE WITH ONLINE BIDDING

Features a brick split level home built in 1978 and has 1,404 SF of living space. Main floor has kitchen, dining room, living room with fireplace, and screened rear patio. 3 bedrooms and 2 full baths upstairs. 2-car attached garage, laundry room. Basement w/ 200-amp electric, central A/C, & electric heat. Nice level lot and concrete driveway. Home sits nicely back off road. Needs a little TLC, but real solid. Open for viewing 1 hour prior to bidding. Taxes are \$1,062 per half.

**Terms On Real Estate:** 10% down auction day, balance due at closing. A 10% buyer's premium will be added to the highest bid to establish the purchase price. Any desired inspections must be made prior to bidding. All information contained herein was derived from sources believed to be correct. Information is believed to be accurate but not guaranteed.

Auction By Order Of: Sarah E. Bowman

## BRICK SPLIT LEVEL HOME ON 1.15 ACRE

Leetonia Schools

37670 MILLER RD.,  
LISBON, OH 44432



**MATTHEW P. KIKO**  
AUCTIONEER/REALTOR®  
330.327.9617  
mattkiko@kikocompany.com

www.kikoauctions.com | 800.533.5456

Information is believed to be accurate but not guaranteed.  
KIKO Auctioneers



Scan for auction details, including directions.

Absolute Auction.  
All sells to the highest bidder.